

Clarke County Hospital - Guidance on Handmade Masks

Background

Community members have rallied behind our need for PPE and have organized efforts to create handmade (or "DIY") masks for our healthcare system.

For additional information, please call Tom Bahls, Communication and Foundation Manager at: 641-342-5489

Instruction

- Masks are to be made in accordance with the following instructions.

Collection, Inspection, and Laundering

- Mask donations should be dropped off at the Administrative Building of the Hospital - across the street to the East of the Main Hospital entrance. Donations will be handled with gloves.
- Team member will launder the donated items and insert the filters (**masks should be donated without filters**).
- The Hospital will use the masks in non-clinical situations. The Hospital will also coordinate distribution of the donated masks, based on need and mask availability, to organizations with need in the community.

Intended Users of Homemade Masks

- Healthcare workers not involved in direct patient care or otherwise directed to wear standard PPE by Employee Health
 - E.g. registration staff
- Patients in the ambulatory, hospital, or home setting without respiratory symptoms who request a mask (patients with respiratory symptoms should be masked with standard PPE)
- Visitors or family members in the ambulatory, hospital, or home setting who request a mask
- Patients being discharged to home, nursing, or group care facilities from hospital, ED, or clinic.
- Staff of nursing or group care facilities that are not involved in direct patient care or to preserve usage of standard PPE.

Stay up-to-date

Remember to check the Clarke County Hospital website (www.clarkehosp.org) for the latest updates, FAQ's, and resources.

Other trusted sites for information on COVID-19 are:

211 IOWA <https://www.211iowa.org/> or call: 2-1-1, or 515-246-6555

Disease Control and Prevention at www.cdc.gov

Iowa Department of Public Health at <https://idph.iowa.gov/>

Clarke County Public Health at <https://clarkecountypublichealth.org/>



**Clarke County
Hospital**

An Affiliate of  **UnityPoint Health**

OLSON MASK PATTERN

Created by: Clayton Skousen & Rose Hedges

VERSION 1 || 03/23/20

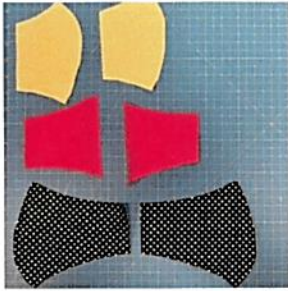
FOR INTERNAL USE

Materials Needed

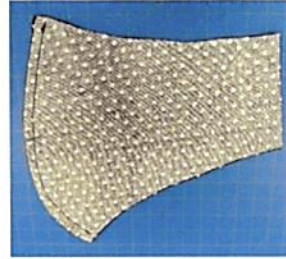


- Cotton Weave Fabric (~½ yard is enough to make 2-3 masks)
- All-Purpose Thread
- Hair Ties (2)*
- Scissors
- Doubled-Sided Skin Adhesive*

* Adding hair ties is optional. If they are put on at the hospital, this will allow for different sizes to be made. Double-sided tape will be applied at the hospital.



1. Using the patterns, cut one of each shape. You will need six (6) total pieces.



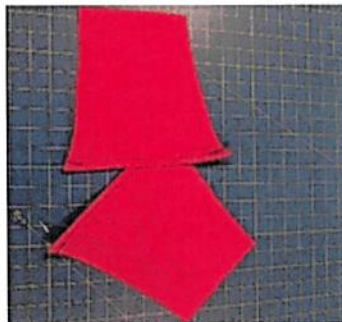
2. Sew face 1 and face 2 together along side 3.



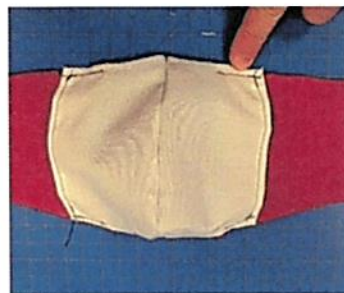
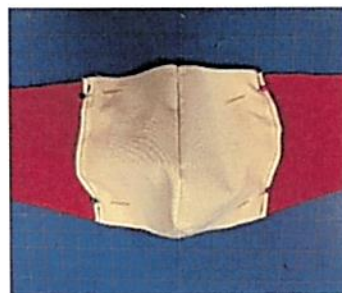
3. Sew mouth 1 and mouth 2 together along side 3.



4. On mouth 1 and mouth 2 sew fold side 5 over $\frac{1}{4}$ inch and sew down.

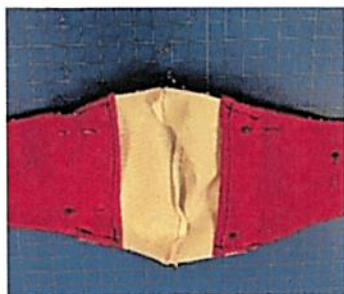


5. On cheek 1 and cheek 2 fold side 6 over $\frac{1}{4}$ inch and sew down.

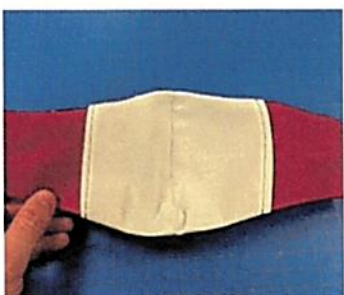


6. Match cheek 1 and mouth 1 at the dotted line (7). Sew a 1-inch tack at side 1 and side 2 where the two pieces overlap.

7. Repeat Step 6 for cheek 2 and mouth 2.

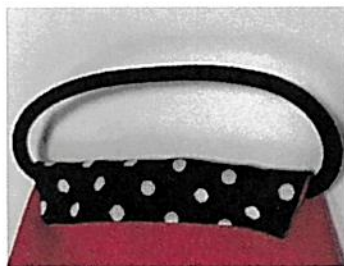


8. With the fronts of the fabric facing each other, sew along the entire perimeter of the mask.



9. Use one of the slits between the mouth and the cheek to turn the mask right-side out.

DO NOT do step 10 or 11 if making this for a health facility.



10. Add a hair tie to each side by folding the fabric on the end of the mask over the tie and sew down.



11. Apply double-sided skin tape around the contour of the mask to create the required seal.

How to launder and inspect the Olson Mask with or without elastic attached:

Wash and inspect prior to use.

1. Wash with machine water setting Hot.

Masks should be washed after each use or when they become moist or soiled.

Use is defined as one shift per healthcare employee. It is acceptable to wash masks at home, because they are not being used for direct patient care or as PPE.

2. Tumble dry.
3. After each washing:
 - a. Inspect seams of mask. Rule out rips, tears, and stains.
 - b. If elastic is in place, stretch elastic to ensure it does not tear or break when stretched.
 - c. If rips, tears, or stains are identified, discard mask.

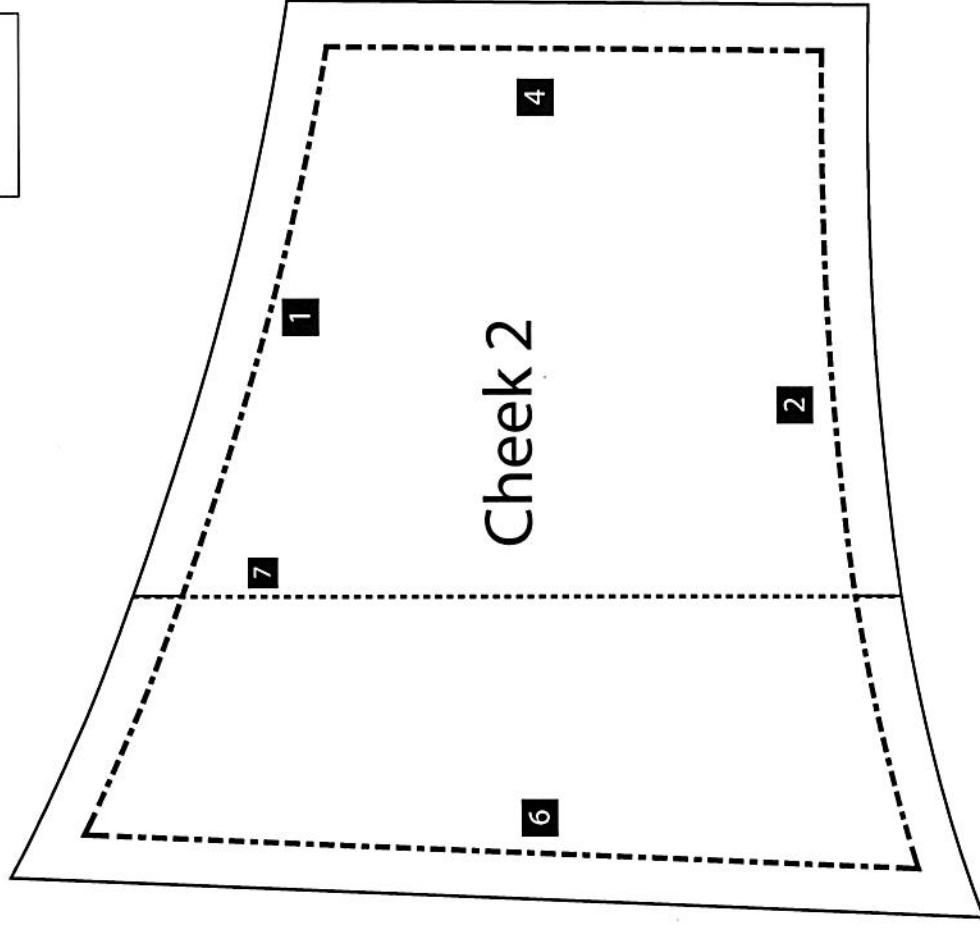
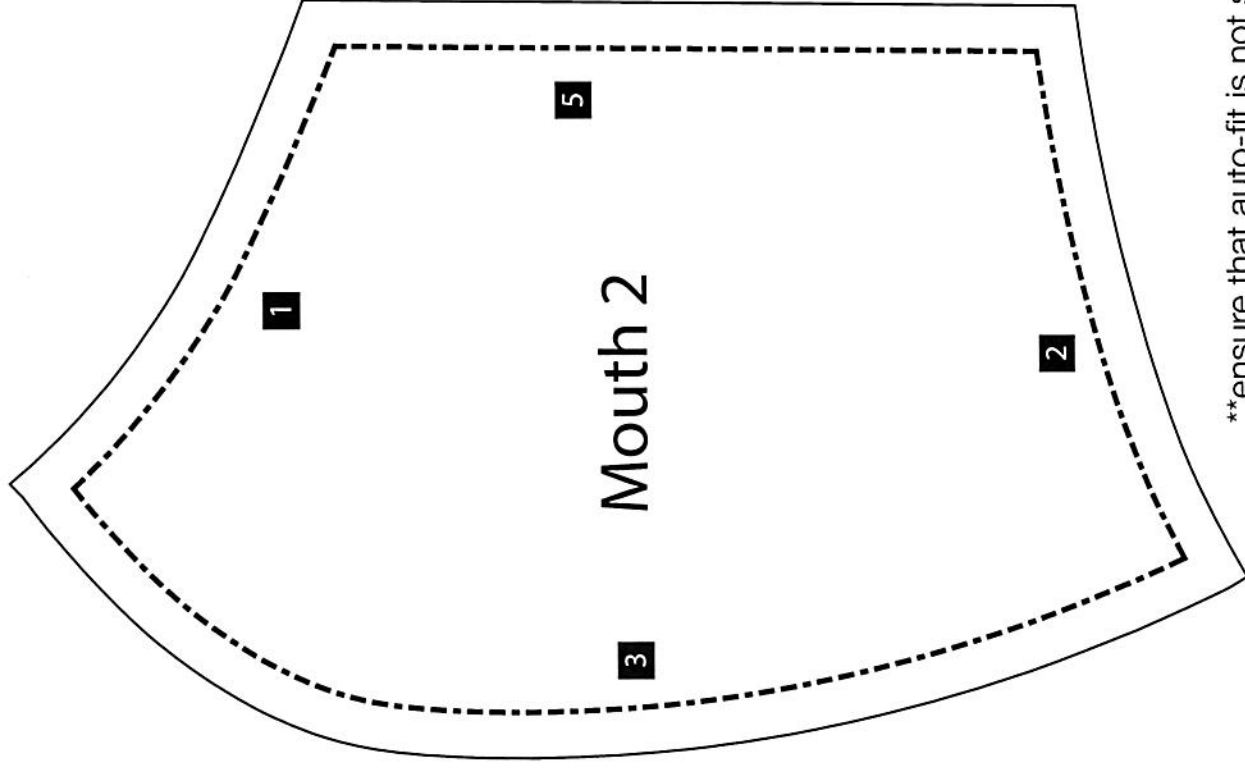
ADDING FILTER

Adding the filter to the Olson Mask (CCH will add filters to all donated masks):

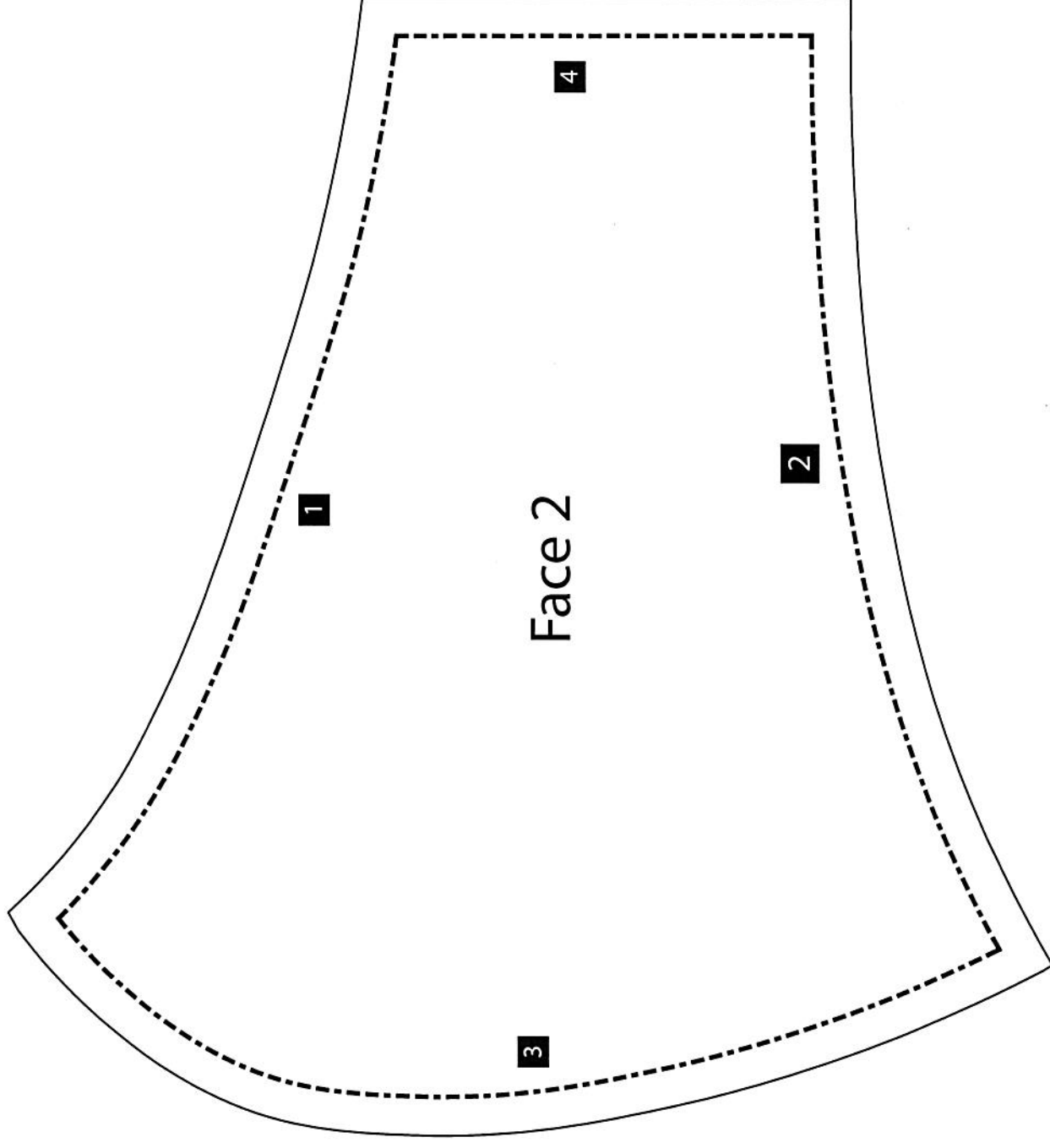
(Filters can be found in many products such as vacuum bags, furnace filters, etc.)

1. Use the pattern template (on the last page) to cut out the size of the filter from your source.
2. Fold the cut filter in half and insert into the pocket.
3. Open the folded filter inside of the pocket, ensuring that it reaches up to the bridge of the nose and down to the chin.

1" x 1"
Test Square



**ensure that auto-fit is not selected when printing to ensure pattern measurements are not altered

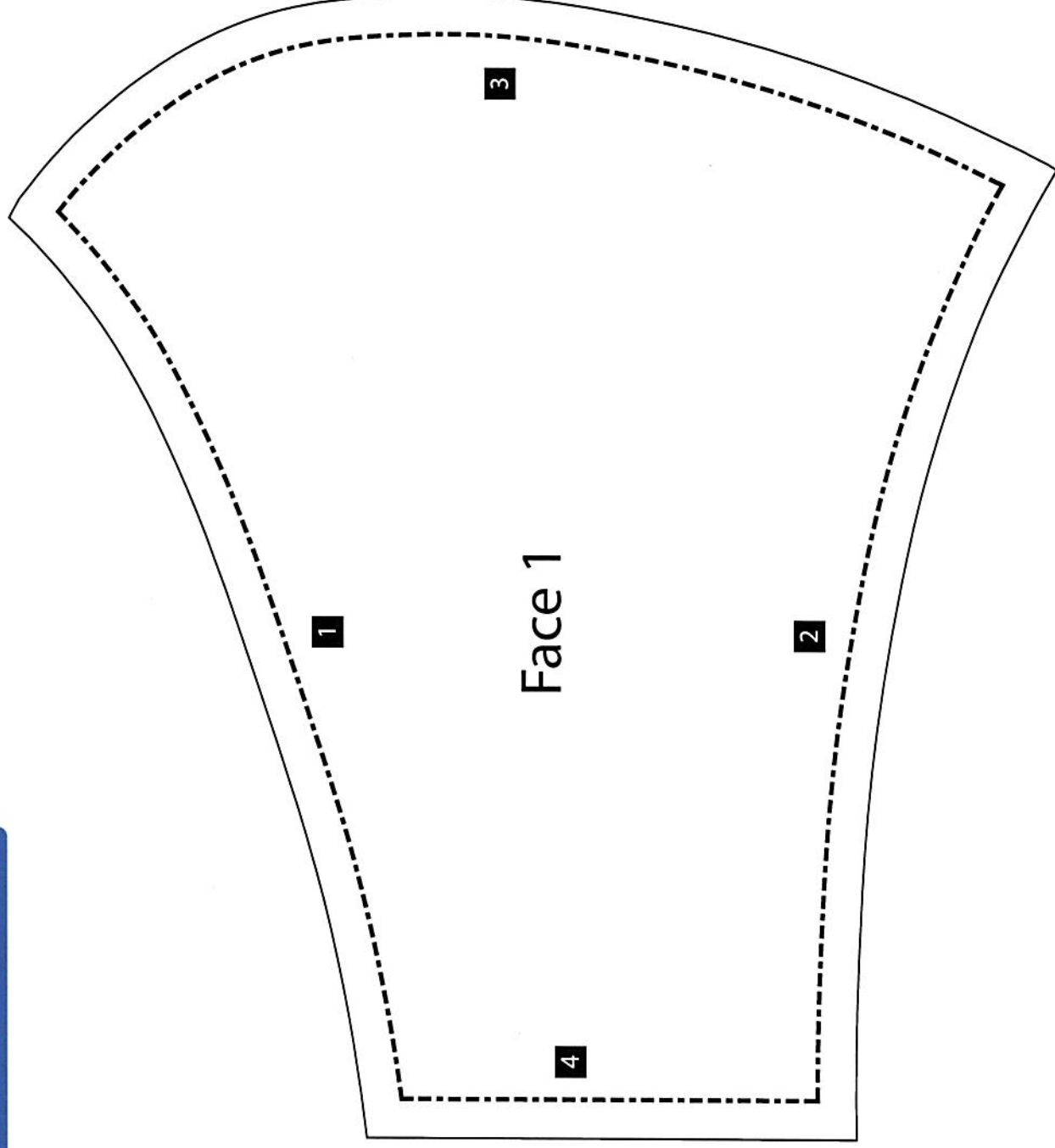


1" x 1"

Test Square

**ensure that auto-fit is not selected when printing to ensure pattern measurements are not altered

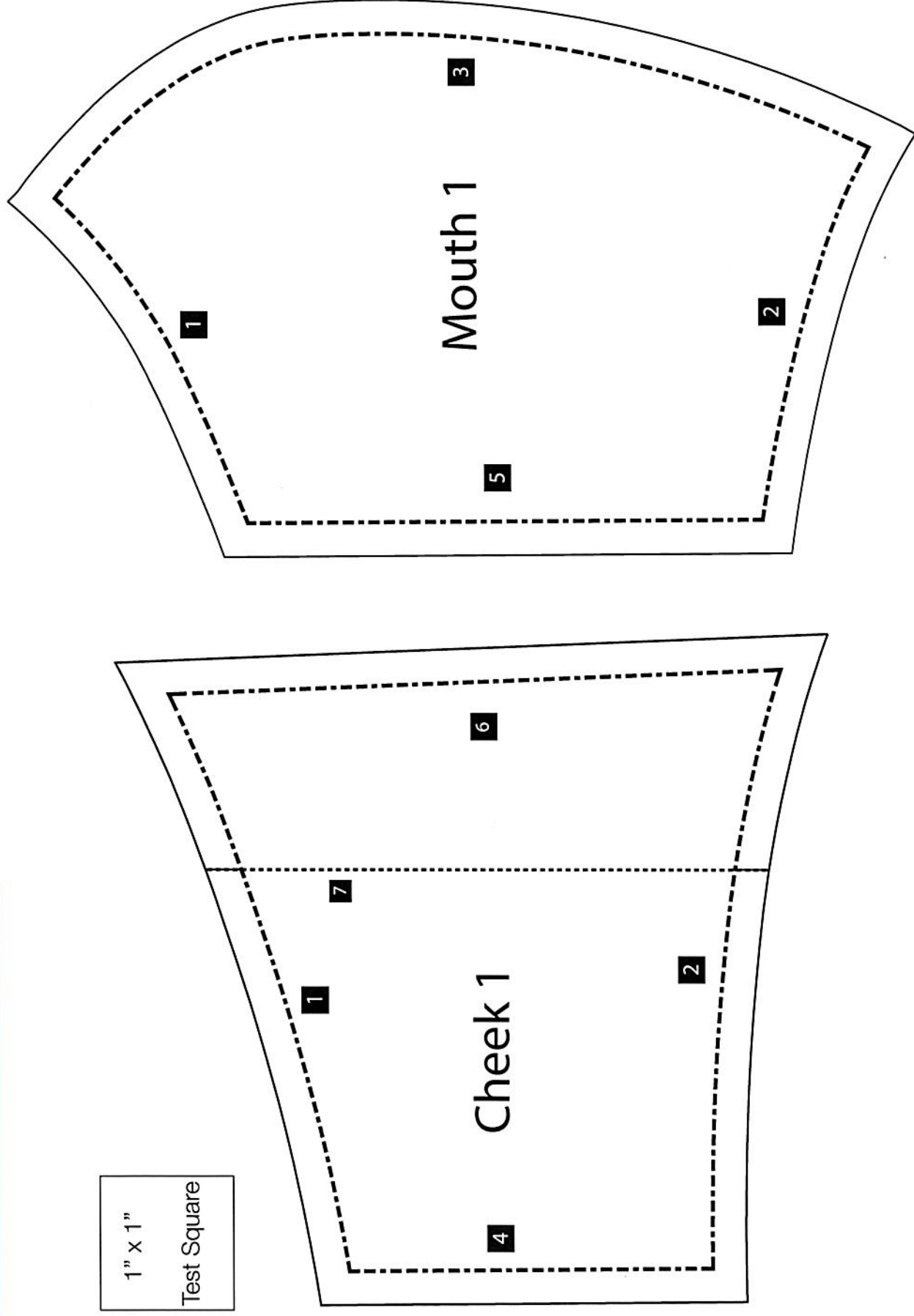
1" x 1"
Test Square



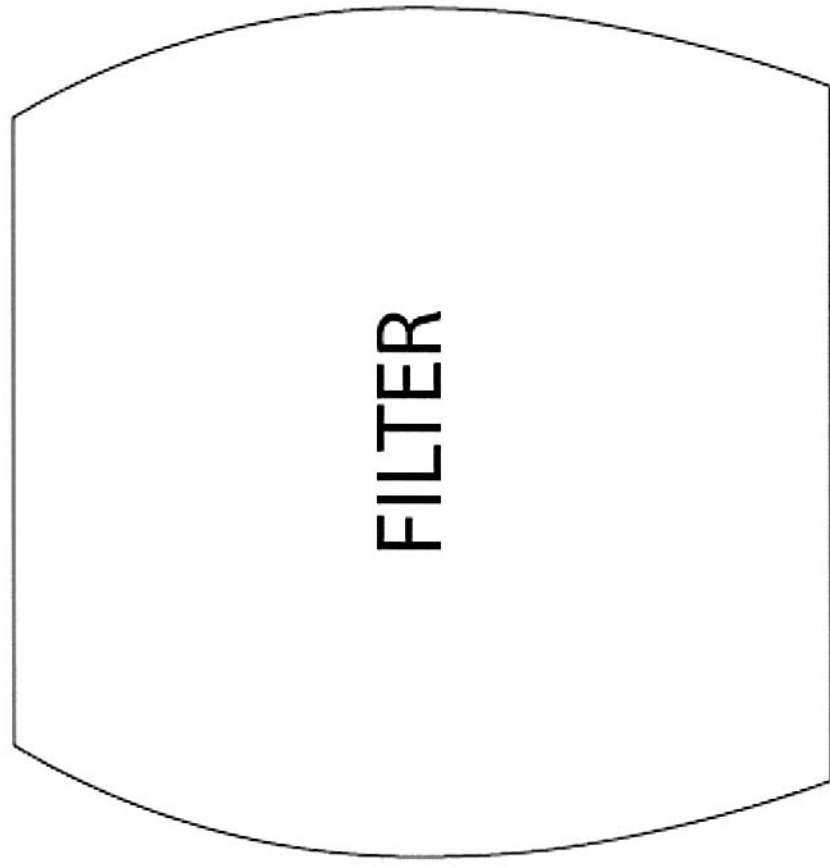
**ensure that auto-fit is not selected when printing to ensure pattern measurements are not altered

Pattern | MOUTH & CHEEK

1" x 1"
Test Square



**ensure that auto-fit is not selected when printing to ensure pattern measurements are not altered



1 INCH